

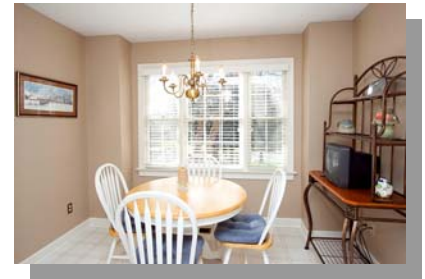
# Lochmere End Unit Townhome



View this home and others at:  
[www.JaneAllenPurtell.com](http://www.JaneAllenPurtell.com)



100 Loch Bend Lane



- 3 Bedrooms & 3 Full Baths
- Wonderful End Unit Townhome
- 1st Floor Master Bedroom
- 2nd Bedroom on Main Level
- Hardwoods in Entry Foyer
- Light/Bright Eat-in Kitchen
- Formal Dining Area
- Living Room with Vaulted Ceiling and Gas Log Fireplace

- 2nd Floor Loft + Large 3rd BR
- Newer Carpet Throughout
- Fresh Interior Paint Feb. 2009
- Neutral Décor Throughout
- Move-in Ready!
- Large Rear Deck w/Seating
- Convenient Cary Location
- Walk to Shopping, Restaurants, Lakes and Trails

For A Personal Showing  
Contact Jane  
**Jane Allen Purtell**  
Voice: 919-858-9334  
Cell: 919-418-8868  
[JPurtell@JaneAllenPurtell.com](mailto:JPurtell@JaneAllenPurtell.com)

Offered at: \$207,500    2069 Sq. Ft.    MLS# 1715467



## Jane Allen Purtell & Associates

From the mountains ... To the sea...  
We Want to be your Realtors for Life.  
We strive constantly to deliver first class service to our customers.  
We appreciate your confidence in us by your referrals.  
Referrals are the life-line of our business.  
We build strong, lasting relationships one person at a time.

[www.JaneAllenPurtell.com](http://www.JaneAllenPurtell.com)



Jane Allen Purtell & Associates  
543 Keisler Dr., Suite 102  
Cary, NC 27518-9321  
Main Office: 919-858-7000  
Home Office: 919-363-8485  
Fax: 919-859-0801  
Email: [JPurtell@JaneAllenPurtell.com](mailto:JPurtell@JaneAllenPurtell.com)