

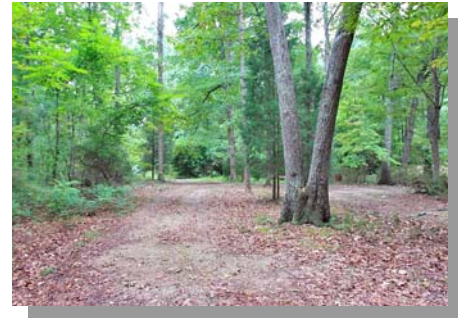
Location, Location, Location!!



View this home and others at:
www.JaneAllenPurtell.com



10217 Creedmoor Road



- Over 5 Acres in a Prime North Raleigh Location
 - Approximately 558 Feet of Road Frontage
 - 1.3 Miles North of I-540
 - Can Possibly Subdivide
- Schools: Jeffrey's Grove, West Millbrook & Leesville HS
 - House and Property SOLD AS IS
 - Brick Ranch Home with Basement
 - Great Investment Opportunity

CALL FOR DETAILS

Jane Allen Purtell
Office: 919-858-7000
Cell: 919-418-8868
JPurtell@JaneAllenPurtell.com

MLS# 1685512 4286 Sq. Ft. MLS# 1685527



Jane Allen Purtell & Associates
From the mountains ... To the sea...
We Want to be your Realtors for Life.
We strive constantly to deliver first class service to our customers.
We appreciate your confidence in us by your referrals.
Referrals are the life-line of our business.
We build strong, lasting relationships one person at a time.
www.JaneAllenPurtell.com



Jane Allen Purtell & Associates
543 Keisler Dr., Suite 102
Cary, NC 27518-9321
Main Office: 919-858-7000
Home Office: 919-363-8485
Fax: 919-859-0801
Email: JPurtell@JaneAllenPurtell.com