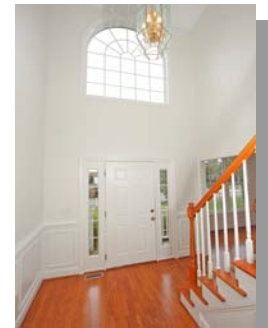
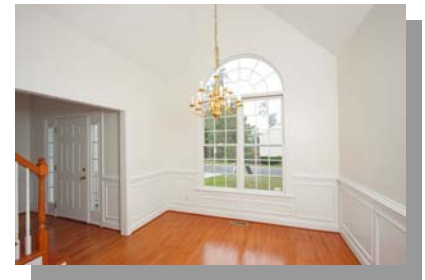
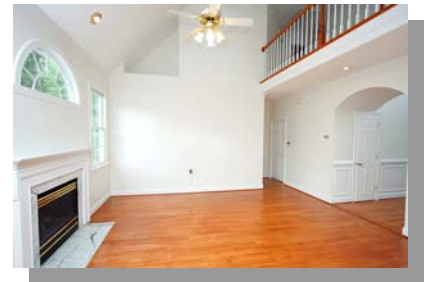


# Linville Ridge Bright Transitional



View this home and others at:  
[www.JaneAllenPurtell.com](http://www.JaneAllenPurtell.com)



- 4 Bedrooms & 2.5 Baths
- 2 Story Entry Foyer
- Hardwoods and New Tile Throughout the Main Level
- New Carpet Upstairs
- Formal Dining Rm w/Cathedral Ceiling & Palladian Window
- Soaring Vaulted Ceiling in the Living Room

- Marble Surround Gas Log Firepl
- Kitchen Features Solid Surface Counters & Sunny Brkfst Area
- 1st Floor Master Bedroom
- Large Upstairs Bedrooms with Walk-in Closets
- 4th Bedroom Could be Bonus
- Large Fenced Backyard
- 1 Year HSA Warranty Included

**For A Personal Showing  
Contact Jane  
Jane Allen Purtell**  
Voice: 919-858-9334  
Cell: 919-418-8868  
JPurtell@JaneAllenPurtell.com

Offered at: \$247,000    2106 Sq. Ft.    MLS# 1739053



## Jane Allen Purtell & Associates

From the mountains ... To the sea...  
We Want to be your Realtors for Life.  
We strive constantly to deliver first class service to our customers.  
We appreciate your confidence in us by your referrals.  
Referrals are the life-line of our business.  
We build strong, lasting relationships one person at a time.

[www.JaneAllenPurtell.com](http://www.JaneAllenPurtell.com)



Jane Allen Purtell & Associates  
543 Keisler Dr., Suite 102  
Cary, NC 27518-9321  
Main Office: 919-858-7000  
Home Office: 919-363-8485  
Fax: 919-859-0801  
Email: JPurtell@JaneAllenPurtell.com