

Fieldstone Village Great Cary Location!

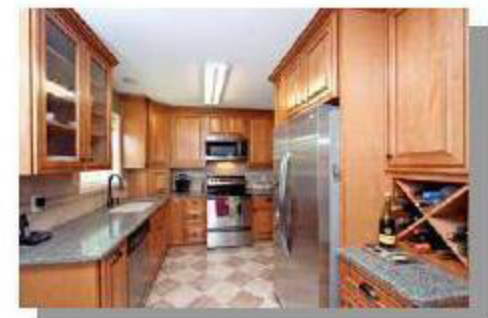
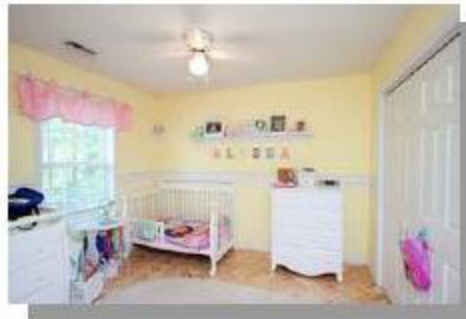


View this home and others at:
www.JaneAllenPurtell.com

1 Year Home Warranty Included!



310 Highfield Avenue



- 3 Bedrooms & 2.5 Baths
- Low Maintenance Brick & Vinyl
- Hardwood Flooring
- Updated Fixtures
- Front to Back Living Room with Marble Surround Firepl
- \$20k in Kitchen Upgrades
- Quartz Counters, New Tile Backsplash & Tile Flooring

\$224,900

- Custom Maple Cabinetry
- Stainless Steel Appliances
- Breakfast Area w/Bay Window
- Vaulted Master Bedroom with Hardwood Flooring
- Nice Level Fenced Backyard
- Large Deck w/Privacy Lattice
- Great Cary Location with Easy Access to Hwy 55, I-540, RDU

Offered at: ~~\$229,900~~ 1563 Sq. Ft. MLS# 1723161

**For A Personal Showing
Contact Jane
Jane Allen Purtell
Voice: 919-858-9334
Cell: 919-418-8868
JPurtell@JaneAllenPurtell.com**



Jane Allen Purtell & Associates

From the mountains ... To the sea...
We Want to be your Realtors for Life.
We strive constantly to deliver first class service to our customers.
We appreciate your confidence in us by your referrals.
Referrals are the life-line of our business.
We build strong, lasting relationships one person at a time.

www.JaneAllenPurtell.com



Jane Allen Purtell & Associates
543 Keisler Dr., Suite 102
Cary, NC 27518-9321
Main Office: 919-858-7000
Home Office: 919-363-8485
Fax: 919-859-0801
Email: JPurtell@JaneAllenPurtell.com