

McKenzie

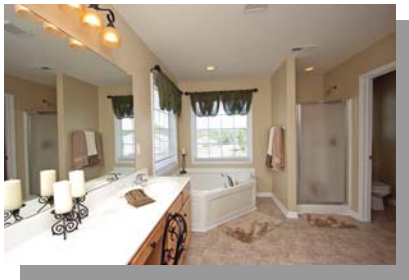
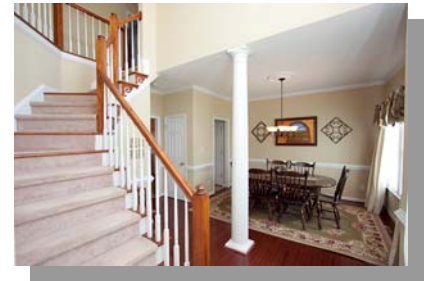
# 2/3 Acre Fenced Lot!



View this home and others at:  
[www.JaneAllenPurtell.com](http://www.JaneAllenPurtell.com)



5564 Spence Plantation Lane



- 3 Bedrooms & 2.5 Baths
- 2nd Floor Bonus Room
- 2 Story Entry Foyer with Hardwoods - Opens to Dining Room
- Family Room w/Bay Window and Gas Log Fireplace
- French Doors Lead to Bright Sunroom and Kitchen
- Solid Surface Counters in Kitch.

- 42" Cabinets & Plenty of Counter Space
- 9 Foot Ceilings on the Main Lvl.
- Master Bedroom w/Vaulted Ceiling
- Bath w/Garden Tub, Dual Vanity and Separate Shower
- .69 Acre Lot w/Fenced Yard
- Widened Driveway for Parking

**For A Personal Showing**  
**Contact Jane**  
**Jane Allen Purtell**  
**Voice: 919-858-9334**  
**Cell: 919-418-8868**  
[JPurtell@JaneAllenPurtell.com](mailto:JPurtell@JaneAllenPurtell.com)

Offered at: \$223,500    2323 Sq. Ft.    MLS# 1723456



### Jane Allen Purtell & Associates

From the mountains ... To the sea...  
 We Want to be your Realtors for Life.  
 We strive constantly to deliver first class service to our customers.  
 We appreciate your confidence in us by your referrals.  
 Referrals are the life-line of our business.  
 We build strong, lasting relationships one person at a time.

[www.JaneAllenPurtell.com](http://www.JaneAllenPurtell.com)



**Jane Allen Purtell & Associates**  
**543 Keisler Dr., Suite 102**  
**Cary, NC 27518-9321**  
**Main Office: 919-858-7000**  
**Home Office: 919-363-8485**  
**Fax: 919-859-0801**  
**Email: [JPurtell@JaneAllenPurtell.com](mailto:JPurtell@JaneAllenPurtell.com)**