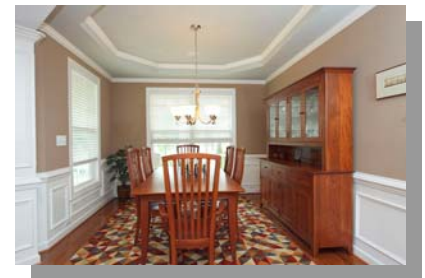
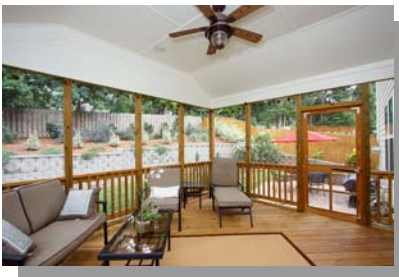
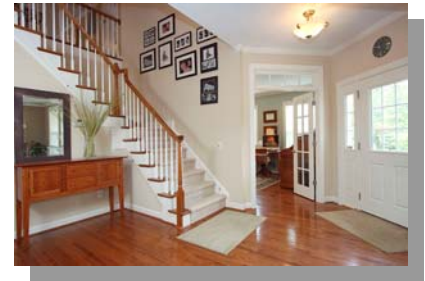


Braeloch - Duxbury Woods Open Floor Plan



View this home and others at:
www.JaneAllenPurtell.com



- 4 Bedrooms & 3.5 Baths
- Hardwoods Throughout 1st Flr.
- Large Foyer Opens to Dining Room & Office with Built-ins
- Bright Family Room w/Granite Surround Gas Log Fireplace
- Eat-in Kitchen w/Granite Counters, Desk & Island
- Inviting Screened Porch

- Vaulted Master Bedroom
- Master Bath w/Tile Shower, Jetted Tub, and Dual Vanity
- Guest Bedroom w/Private Bath
- 2nd Floor Bonus Room
- Wrap-Around Front Porch
- Fenced Yard w/Stone Patio, Stacked Stone & Plantings
- Quiet Cul-de-sac Street

**For A Personal Showing
Contact Jane
Jane Allen Purtell**
Voice: 919-858-9334
Cell: 919-418-8868
JPurtell@JaneAllenPurtell.com

Offered at: \$398,500 2963 Sq. Ft. MLS# 1740745



Jane Allen Purtell & Associates

From the mountains ... To the sea...
We Want to be your Realtors for Life.
We strive constantly to deliver first class service to our customers.
We appreciate your confidence in us by your referrals.
Referrals are the life-line of our business.
We build strong, lasting relationships one person at a time.

www.JaneAllenPurtell.com



Jane Allen Purtell & Associates
543 Keisler Dr., Suite 102
Cary, NC 27518-9321
Main Office: 919-858-7000
Home Office: 919-363-8485
Fax: 919-859-0801
Email: JPurtell@JaneAllenPurtell.com